

## UNIQUE FEATURES

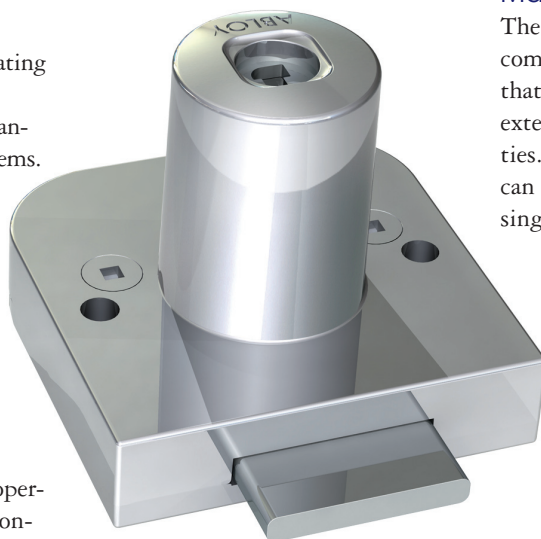
The unique **ABLOY®** cylinder construction, patented cylinders, strict key control and extensive masterkeying capabilities make **ABLOY®** cabinet locks ideally suited for the most demanding applications.

### Unique construction

Based on a unique operating principle which employs rotating detainer discs, **ABLOY®** cabinet locks offer many advantages over other locking systems.

### Resistance to harsh conditions

The **ABLOY®** cylinder contains no springs or pins which mean that they can operate in a wide range of environmental conditions. All the components are highly resistant to wear, dirt, moisture, corrosion or freezing conditions.



### User-friendly

The disc control system and symmetrical key make **ABLOY®** cabinet locks easy to operate.

### Masterkeying capabilities

The several million different key combinations available mean that the **ABLOY®** cylinder offers extensive masterkeying possibilities. All **ABLOY®** cylinder products can be made to operate with just a single key.

### Virtually pickproof

Only the correct key can align the gates on all the discs and permit the locking bar to disengage the cylinder from the housing.

The **ABLOY®** PROTEC cylinder employs a new, patented disc blocking system (DBS) which makes it impossible to manipulate the cylinder so that it opens without the correct key.

## ADJUSTMENTS



All **ABLOY®** cabinet locks are delivered with a default action where key is removable only in locked position. By adjusting the hexagonal bolt on the rear reverse of the lock key can be removed both locked and unlocked positions.

  
**CoinSecuritySystems**  
ASSET PROTECTION  
800.266.2646  
[www.coinsecurity.com](http://www.coinsecurity.com)

## KEY SECURITY

To ensure security, it is extremely significantly important to be aware of who is using the keys and how they are stored. Equally important is to choose the right key and cylinder system to meet the needs of each application. To guarantee maximum customer security **ABLOY®** cylinder system offers a variety of key profiles and patented key security levels with a factory-controlled key service.

### **ABLOY® PROTEC**

- All metal key
- Patented key, key blank and cylinder construction
- Disc blocking system (DBS)
- Can be masterkeyed to work with **ABLOY®** cylinders
- Extensive range of **ABLOY®** industrial locks available



### **ABLOY® EXEC**

- Nickel-silver key with heavyduty polymer key bow
- Patented key, key blank and cylinder construction
- Particularly suitable for industrial locking systems
- Exceptional picking and environmental resistance
- Can be masterkeyed to work with **ABLOY®** cylinders



### **ABLOY® CLASSIC**

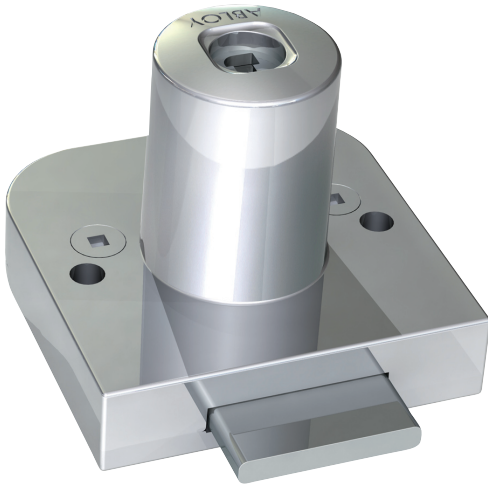
- All metal key
- Cost effective solution for basic security level applications
- Can be masterkeyed to work with **ABLOY®** cylinders



  
**Coin Security Systems**  
ASSET PROTECTION

800.266.2646  
[www.coinsecurity.com](http://www.coinsecurity.com)

## OF230, OF220



### OF230C, OF230E, OF230N

- Maximum door thickness in assembling 25mm
- Number of rotating discs: 11
- Type of bolt: Flat

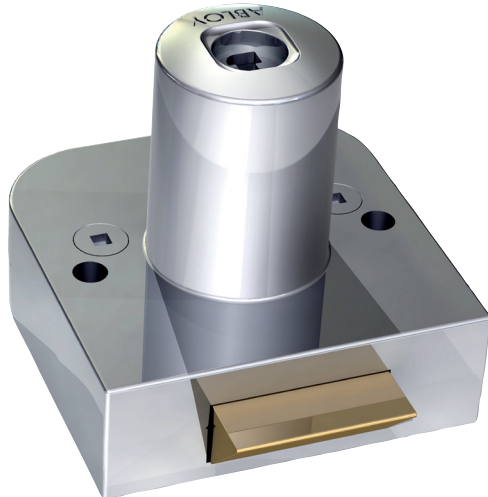
### OF220C

- Maximum door thickness in assembling 19mm
- Number of rotating discs: 7
- Type of bolt: Flat
- Cannot be masterkeyed with door lock cylinders

#### Materials and finish:

- Cylinder housing: Chromium plated zinc
- Bolt: Nickel plated steel

## OF231, OF221



### OF231C, OF231E, OF231N

- Maximum door thickness in assembling 25mm
- Number of rotating discs: 11
- Type of bolt: Spring latch

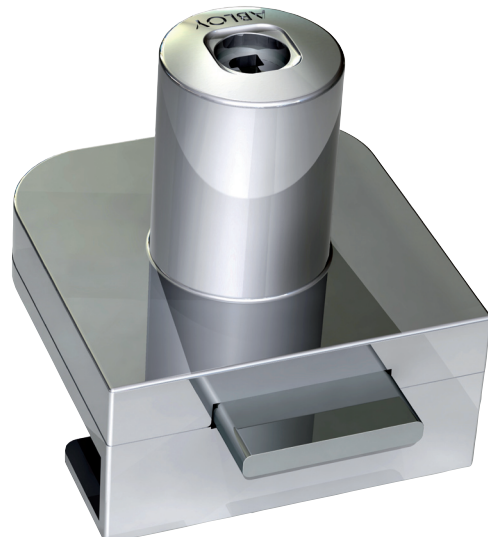
### OF221C

- Maximum door thickness in assembling 19mm
- Number of rotating discs: 7
- Type of bolt: Spring latch
- Cannot be masterkeyed with door lock cylinders

#### Materials and finish:

- Cylinder housing: Chromium plated zinc
- Bolt: Brass

## OF232, OF222



### OF232C, OF232E, OF232N

- Maximum door thickness in assembling 8mm
- Number of rotating discs: 11
- Type of bolt: Flat

### OF222C

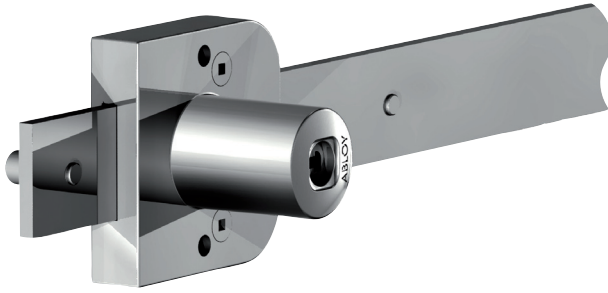
- Maximum door thickness in assembling 8mm
- Number of rotating discs: 7
- Type of bolt: Flat
- Cannot be masterkeyed with door lock cylinders

#### Materials and finish:

- Cylinder housing: Chromium plated zinc
- Bolt: Nickel plated steel

Cylinder system: **ABLOY® CLASSIC** = C, **ABLOY® EXEC** = E, **ABLOY® PROTEC** = N

## OF233



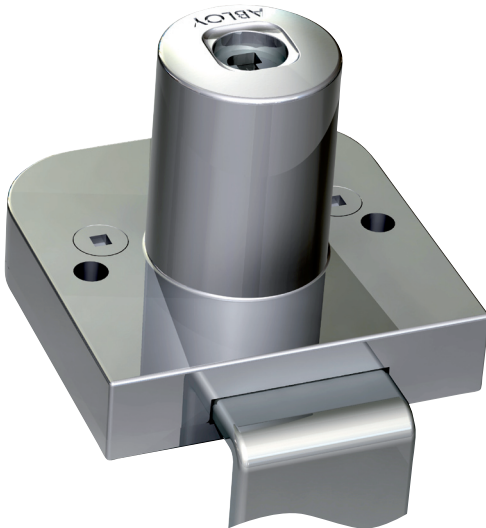
### OF233C, OF233E, OF233N

- Maximum door thickness in assembling 25mm
- Number of rotating discs: 11
- Type of bolt: Flat

#### Materials and finish:

- Cylinder housing: Chromium plated zinc
- Bolt: Nickel plated steel

## OF234



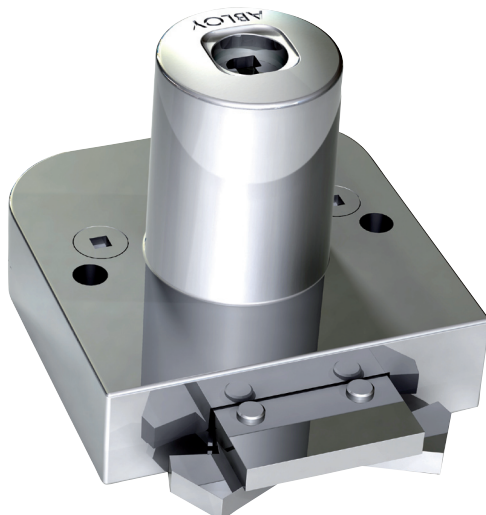
### OF234C, OF234E, OF234N

- Maximum door thickness in assembling 25mm
- Number of rotating discs: 11
- Type of bolt: Flat

#### Materials and finish:

- Cylinder housing: Chromium plated zinc
- Bolt: Nickel plated steel

## OF235



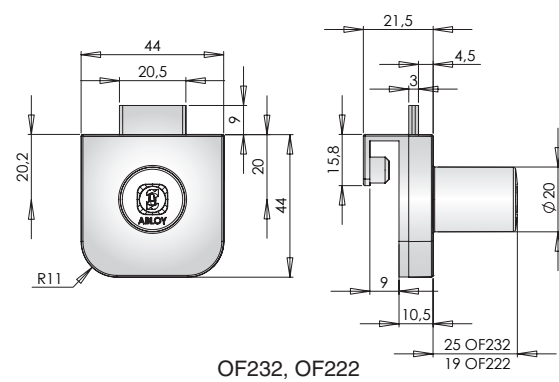
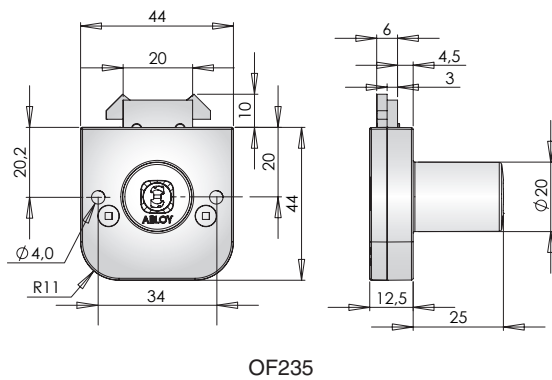
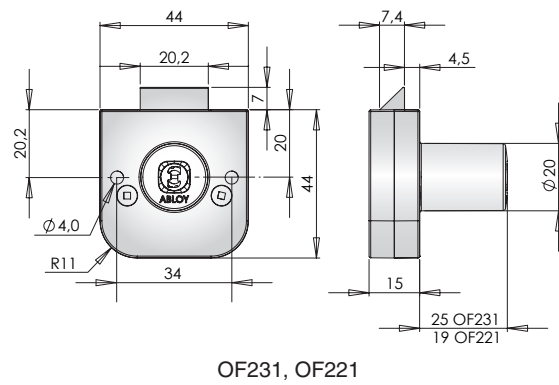
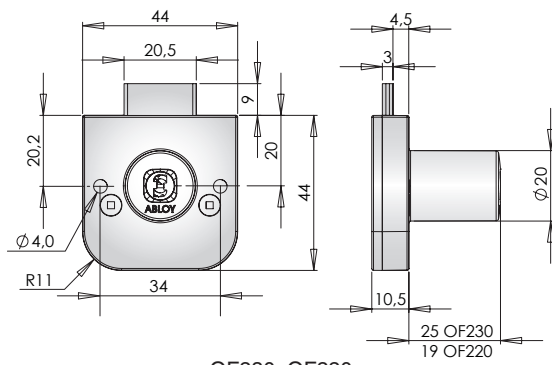
### OF235C, OF235E, OF235N

- Maximum door thickness in assembling 25mm
- Number of rotating discs: 11
- Type of bolt: Double hook

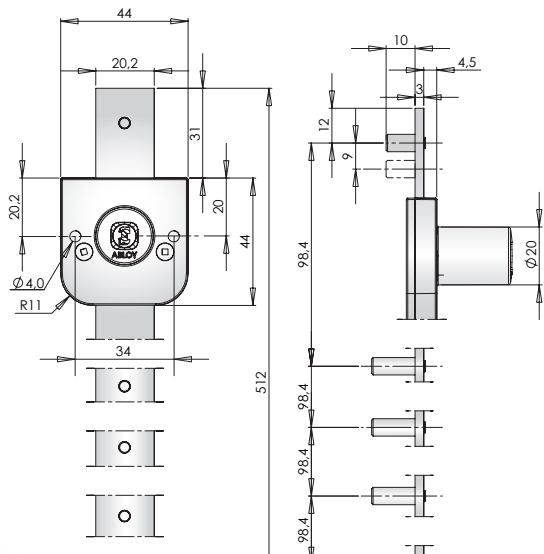
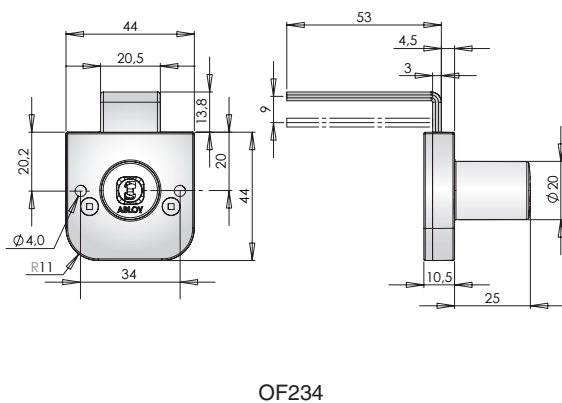
#### Materials and finish:

- Cylinder housing: Chromium plated zinc
- Bolt: Nickel plated steel

## CABINET LOCKS



## CABINET LOCKS WITH CENTRAL LOCKING BAR





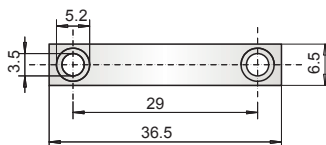
## ACCESSORIES

### Striker plates

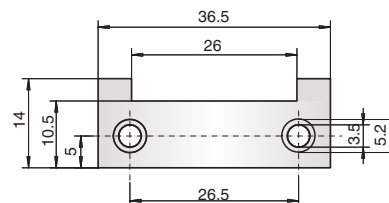
802330



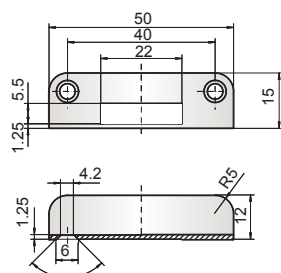
Material: Nickel plated steel



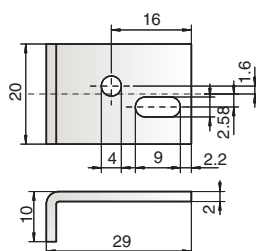
434980



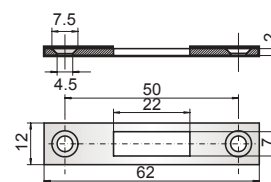
434981



434987



455365

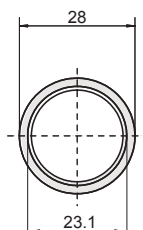


Materiaali niklattua messinkiä  
802330

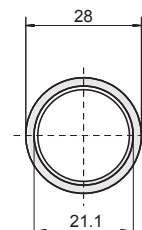
### Escutcheon ring



401746 Chromium plated brass



413529 Chromium plated brass



### Keep 401930



Material: Nickel plated brass

