

Cabinet Locks



800.266.2646
www.coinsecurity.com
sales@coinsecurity.com

Medeco® high security cabinet locks are specifically designed for drawer or cabinet door applications where a conventional utility cam lock may not be suitable. Cabinet locks utilize heavy-duty bolts and multi-point attachment to the mounting surface in order to withstand the heavy use and higher physical security some applications may require. All Medeco cabinet locks feature solid brass and steel construction, available in either fixed or removable core. Patented key programs prevent the unauthorized duplication of keys and maintain system integrity. Keyed alike, keyed different, or master keyed, Medeco offers either spring latch or deadbolt models to meet your specific needs.



The Medeco³ unique design provides triple locking action, making the locks virtually pick proof. All Medeco³ keys and locks are protected under patent, trademark, and copyright laws. Medeco³ keys may only be duplicated by Medeco or by an authorized Medeco Service Center, and only at your request.

Benefits:

- ▼ Medeco high security cabinet locks are constructed of durable machined brass and solid steel components.
- ▼ Available in either fixed or removable core depending on your specific requirements.
- ▼ Available in either deadbolt or spring latch models.
- ▼ Unique elevating and rotating tumbler pin system is virtually pick proof.
- ▼ Patented Medeco³ keys may only be duplicated by Medeco or authorized Medeco Service Center, and only at your request.
- ▼ Medeco cabinet locks are completely serviceable, and can be re-keyed in case of lost or stolen keys
- ▼ Medeco cabinet locks can be keyed in with other 60 series products (10 series products may be keyed into existing 60 series systems)
- ▼ Locks can be keyed alike, keyed different, or master keyed depending on your specific needs.

Applications:

Medeco high security cabinet locks are specifically designed for use in metal or wooden drawer and cabinet door applications including medical and narcotics chests and cabinets, showcases, cash cart and drawers.

Warranty:

Warranted for two years against manufacturer's defects. See Medeco limited Warranty for full details.

Certification:

UL® 437 Listed

Technical Information:

Four pin models available in either deadbolt or spring latch versions. 7/8" diameter, surface mount fixed or removable core available. Deadbolt fixed core available in non-key retaining. Keyed alike, keyed different, or master keyed.

Finishes:

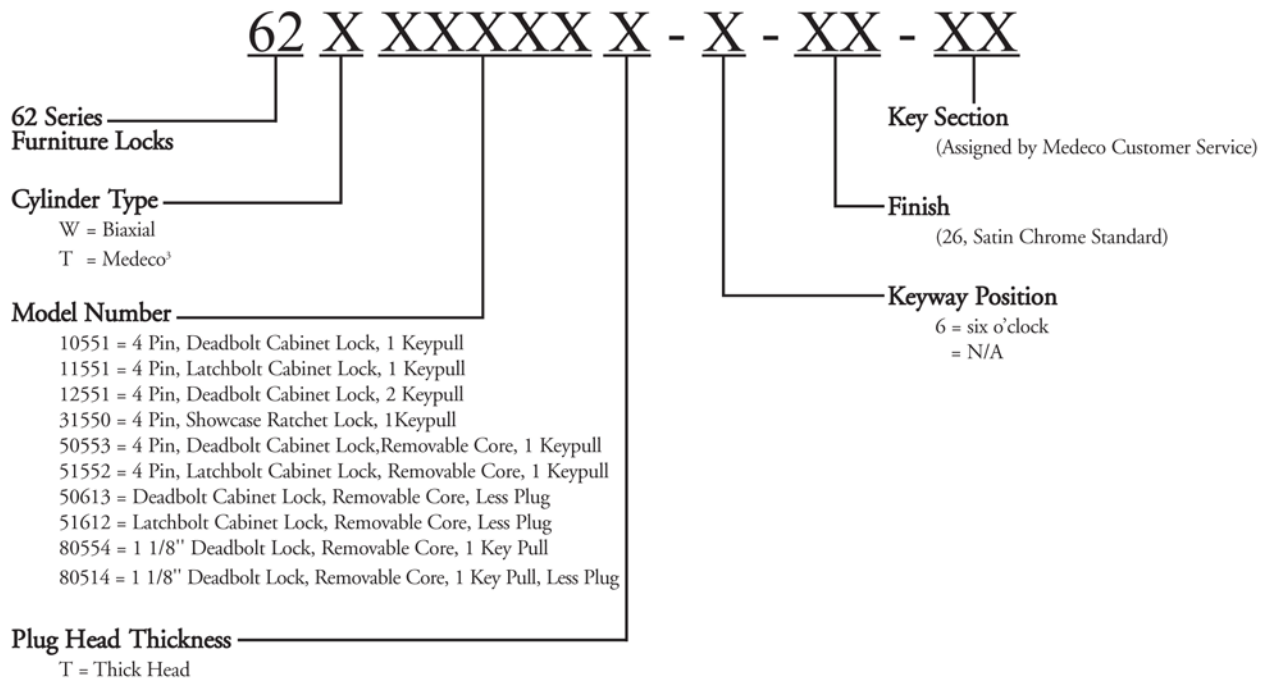
26 Satin chrome finish standard. Other finishes available, depending on volume.

Cabinet Locks

Ordering Instructions



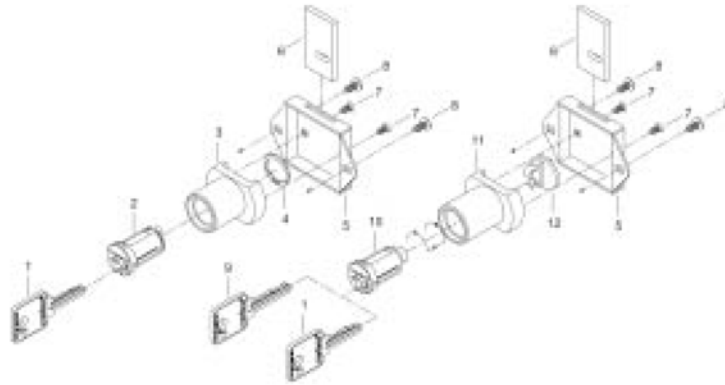
800.266.2646
www.coinsecurity.com
sales@coinsecurity.com



Cabinet Locks

Exploded View

MEDECO® DEADBOLT CABINET LOCKS



ITEM	DESCRIPTION
1	Operating Key (4 Pin key for operating lock).
2	Plug Assembly
3	Shell
4	Retaining Ring
5	Case, Deadbolt
6	Deadbolt
7	4-40 Assembly Screw
8	6-20 Mounting Screw
9	Control Key (5 Pin key for removing core).
10	Plug Assembly
11	Shell
12	Drive Adaptor, Deadbolt

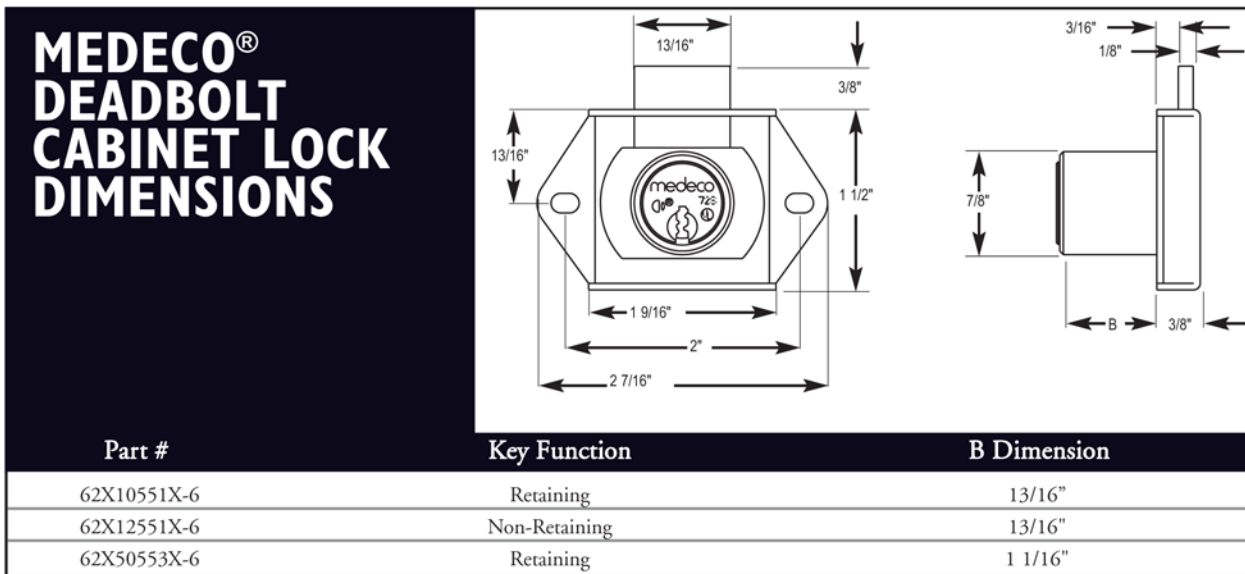
Cabinet Locks

Technical Drawings

Specifications: Medeco deadbolt cabinet locks come in either a key retaining or non-key retaining format, and are designed for surface mount installations on wood or metal panels. Available in either standard or quick change removable core versions, Medeco deadbolt cabinet locks are completely servicable and can be re-keyed to new codes as required.

Material: The Cylinder is constructed from half hard brass and chrome plated finish (US626) is standard. Case and bolt are both nickel-plated steel.

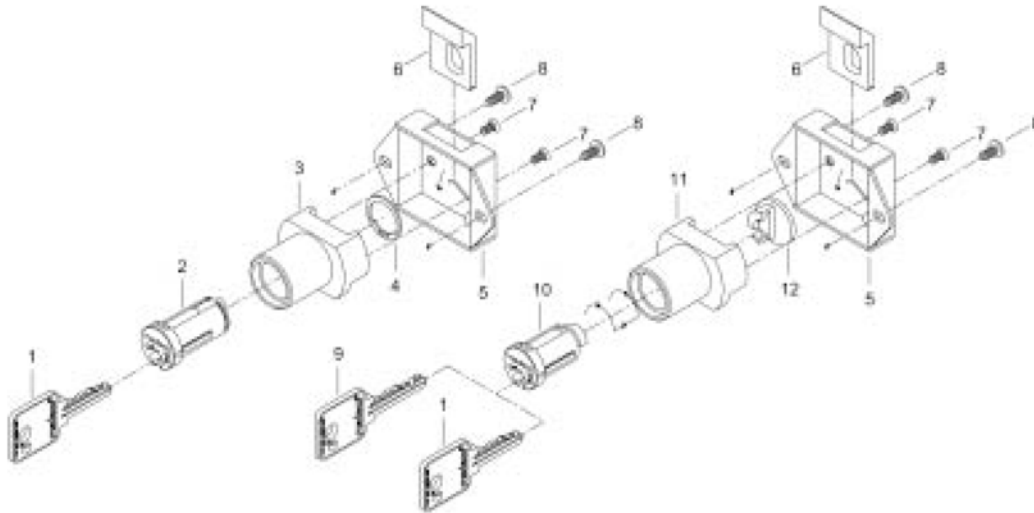
Operation: Four pin, key retaining or non-key retaining cylinder for standard version (removable core only) available in key retaining. 180° clockwise rotation to fully retract bolt.



Cabinet Locks

Exploded View

MEDECO® LATCHBOLT CABINET LOCKS



ITEM	DESCRIPTION
1	Operating Key (4 Pin key for operating lock).
2	Plug Assembly
3	Shell
4	Retaining Ring
5	Case, Latch Bolt
6	Latch Bolt
7	4-40 Assembly Screw
8	6-20 Mounting Screw
9	Control Key (5 Pin key for removing core).
10	Plug Assembly
11	Shell
12	Drive Adaptor

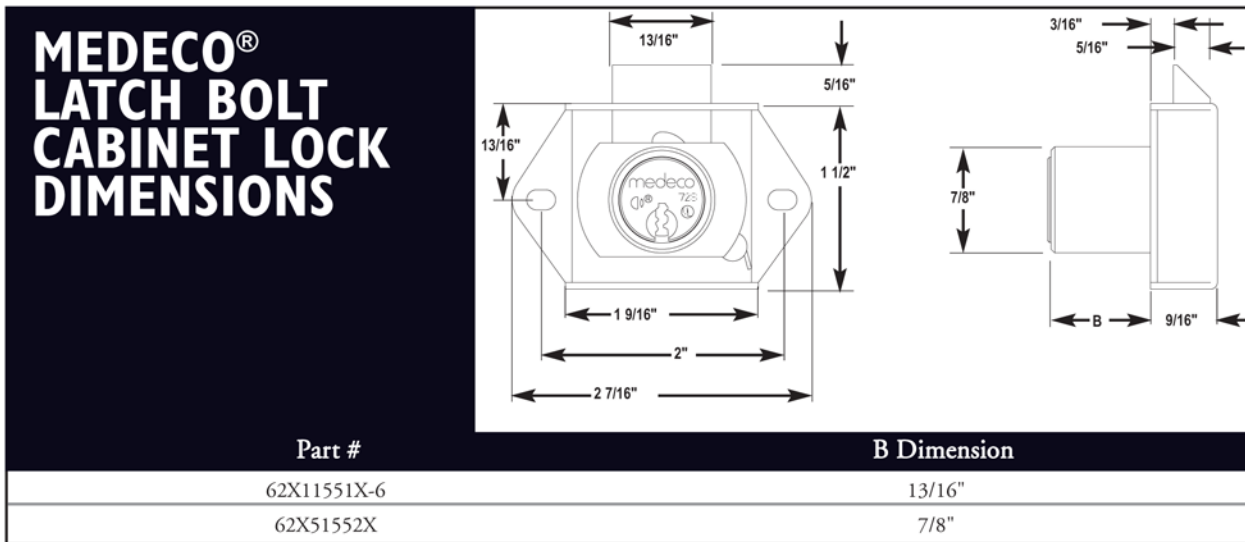
Cabinet Locks

Technical Drawings

Specifications: Medeco self-locking, latch bolt cabinet locks are designed for surface mount installations on wood or metal panels. Available in either standard or quick change removable core versions, Medeco latch bolt cabinet locks are completely servicable and can be re-keyed to new codes as required.

Material: The Cylinder and bolt are constructed from half hard brass and chrome plated finish (US626) is standard. Case is nickel-plated steel.

Operation: Four pin, key retaining cylinder for both standard and removable core version. 155° clockwise rotation to fully retract bolt.

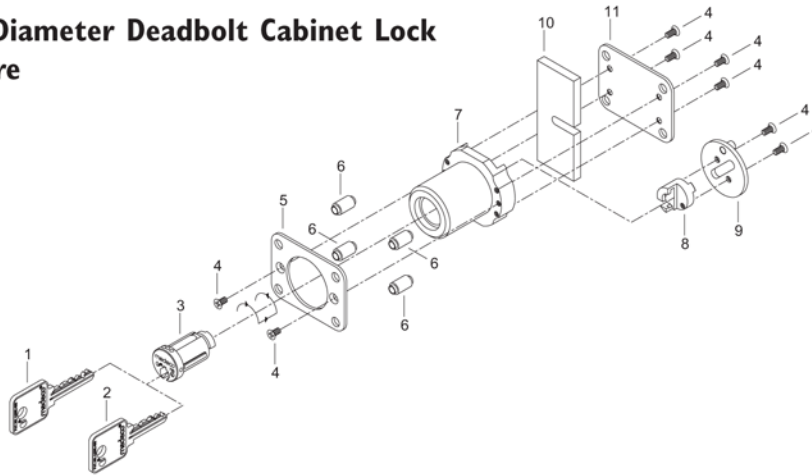


Cabinet Locks

Technical Drawings

1 1/8" Diameter Deadbolt Cabinet Lock Removable Core

4 Pin, 1 1/8" Diameter Deadbolt Cabinet Lock Removable Core



ITEM	DESCRIPTION
1	Operating Key (4 Pin key to operate lock).
2	Control Key (5 Pin key for removing core).
3	Plug Assembly
4	4-40 Screw
5	Front Plate
6	Screw Guide
7	Shell
8	Actuator
9	Drive Assembly
10	Deadbolt
11	Back Plate

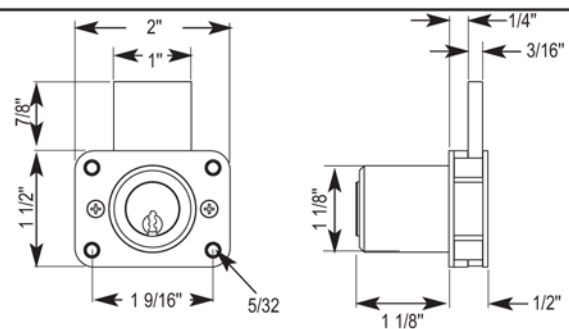
Specifications: Medeco 1 1/8" diameter deadbolt cabinet locks with the removable core function provide superior security over standard cam and cabinet locks. Oversized deadbolt with full 7/8" throw and multipoint fastening of lock to mounting surface prevent illicit forced entry. Removable core function allows for instantaneous re-keying in case of lost or stolen keys. Typical applications include cash drawers, utility access doors, display cases, and other types of cabinet applications where higher security is required. Retrofits Best 3L, Olympus 721, and Schlage CL.

Material: Plug and shell made from chrome plated (626 finish) half hard brass. Drive assembly is nickel plated brass. Front & back plate as well as bolt made of nickel plated steel.

Operation: Four pin removable core model available. Key retaining cylinders only. 180 degree clockwise rotation to fully retract bolt.

1 1/8" Diameter Deadbolt Cabinet Lock Removable Core Dimensions:

Part Number	Description
62X80554-	1 1/8" Deadbolt, Fixed Core
62-80514-	1 1/8" Deadbolt Assembly Less Core





Nexgen XT Popout - Output, T-Handle Cylinder

Description	Part Number	Nexgen XT	M3 Logic	Logic	List
Nexgen XT popout cylinder with springbolt	EV-8500S	•			
Nexgen XT popout cylinder with deadbolt	EV-8500D	•			

Classic Logic Popout - Output, T-Handle cylinder

Description	Part Number	Nexgen XT	M3 Logic	Logic	List
Logic popout with springbolt	64 C12 0 0			•	
Logic popout with deadbolt	64 C12 0 1			•	



High Security Cabinet Locks

Description	Part Number	Medeco	BiLevel	KeyMark eCylinder
Cabinet lock with deadbolt, single keypull	62 *10 5 5 5	•		
Cabinet lock with deadbolt, double keypull	62 *12 5 5 5	•		
Cabinet lock with spring bolt, single keypull	62 *115 5 5	•		
Removable core cabinet lock with deadbolt, single keypull, less plug	62 -7 0 5 15	•		
Removable core cabinet lock with spring bolt, single keypull, less plug	62 -7 15 15	•		
Plug for removable plug cabinet lock	66*39 1X X X	•		
Plunger lock, round bolt	62 *2 15 5 7	•		
Plunger lock, 5 pin glass mount	62 *615 5 7 T	•		



SF-1C Cabinet Locks

Description	Part Number
Cabinet lock with deadbolt for SF-1C cylinder. Works with KeyMark, Nexgen XT SF-1C, or Best style SF-1C.	CP -2 8 67 4 0
Cabinet lock with spring latch for SF-1C cylinder. Works with KeyMark, Nexgen XT SF-1C, or Best style SF-1C cylinders.	CP -2 8 662 0



Classic Logic Cabinet Locks

Description	Part Number	Nexgen XT	M3 Logic	Logic	List
Plunger Lock, Round Bolt	4 9 C0 35 8			•	
Cabinet Lock, Latch Bolt	4 9 C0 35 9			•	
Showcase Ratchet Lock	4 9 C0 361			•	
Cabinet Lock, Deadbolt	4 9 C0 366			•	
Plunger Lock, T-Bolt	4 9 C0 368			•	

**Refer to the eCylinder section for more detail on specific technologies available and pricing.

The * in the part number is replaced with: T=Medeco3, W=BiAxial, C=Logic, "-"=Original

***See key section for surcharges for custom coined cut keys or special stamping requirements